

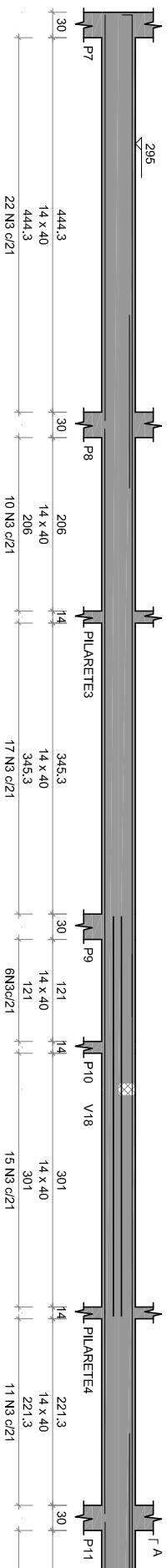
1 N29 ø10,0 C=205 (2ø)

75

1 N30 ø10,0 C=235 (2ø)

135

2x2 N5 ø6,3 C=474 (PELE)



2 N27 ø10,0 C=481 (1ø)

15

2 N13 ø8,0 C=1051 (1ø)

2 N14 ø8,0 C=241 (1ø)

15

V4
ESC 1:50

2 N41 ø12,5 C=1200 (1ø)

95

2 N42 ø12,5 C=1144 (1ø)

1 N40 ø12,5 C=295 (2ø)

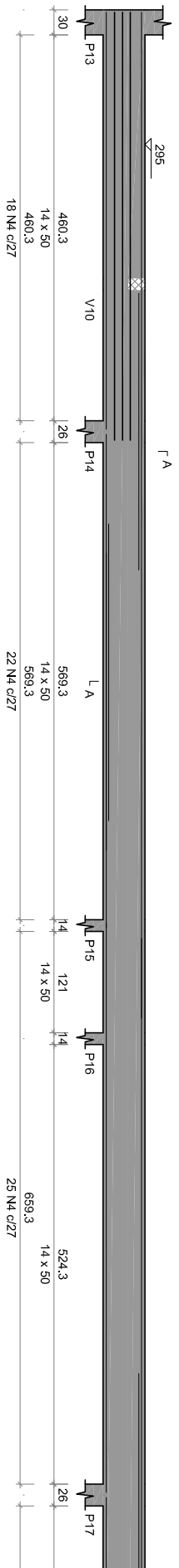
150

2x3 N6 ø6,3 C=510 (PELE)

1 N39 ø12,5 C=330 (2ø)

185

f A



2 N33 ø10,0 C=497 (1ø)

110

2 N15 ø8,0 c/35 C=354 (1ø1c+1ø2c)

2 N16 ø8,0 C=589 (1ø)

3

2 N34 ø10,0 C=679 (1ø)

120

3