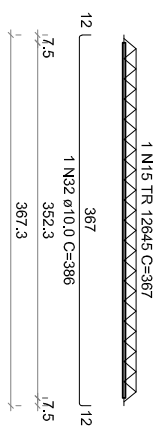
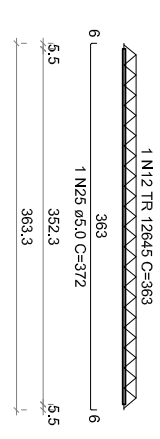


VT13a (11 unidades)
(L13)
ESC 1:50

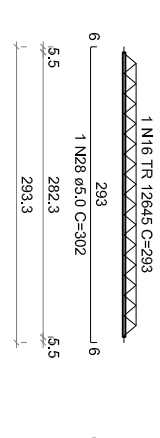
VT14a (11 unidades)
(L14)
ESC 1:50



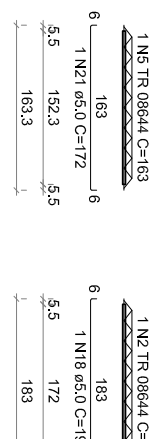
VT6a (14 unidades)
(L6)
ESC 1:50



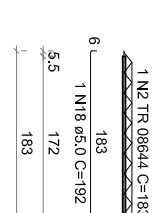
VT6b (1 unidades)
(L6)
ESC 1:50



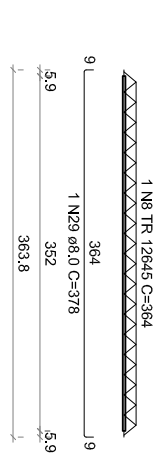
VT15a (9 unidades)
(L15)
ESC 1:50



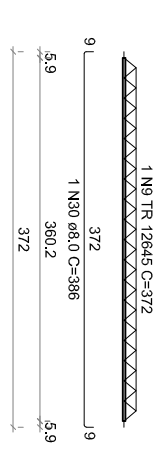
VT16a (4 unidades)
(L16)
ESC 1:50



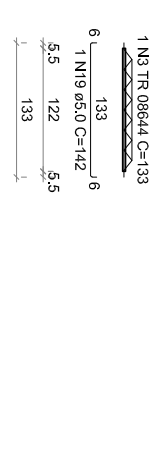
VT17a (11 unidades)
(L17)
ESC 1:50



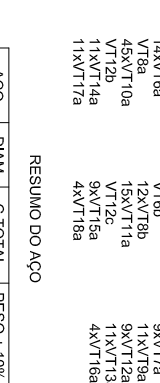
VT12a (9 unidades)
(L12)
ESC 1:50



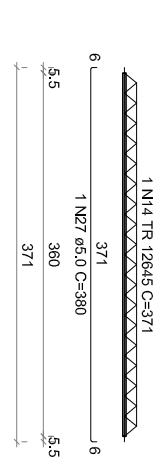
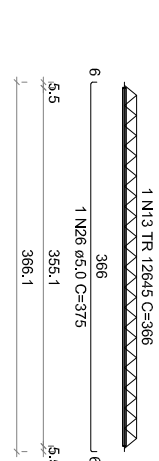
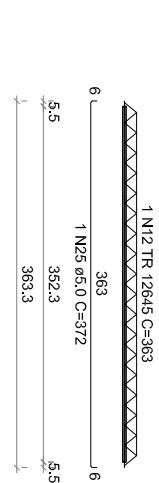
VT12b (1 unidades)
(L12)
ESC 1:50



VT7a (9 unidades)
(L7)
ESC 1:50



VT12c (1 unidades)
(L12)
ESC 1:50



RESUMO DO AÇO

AÇO	DIAM (mm)	C:TOTAL (m)	PESO + 10% (kg)
CA50	8,0	155,1	67,3
CA60	10,0	42,5	28,8
CA60	5,0	474,1	80,4
TR 08644		264,7	214
TR 12645		383,2	375,2
PESO TOTAL (kg)			375,2
CA50	96,1		
CA60	689,6		

Volume de concreto (C-25) = 0,00 m³
Área de forma = 0,00 m²

RELAÇÃO DO AÇO

15xVT1a	4xVT2a	11xVT2b
11xVT3a	7xVT4a	11xVT3a
14xVT6a	VT6b	9xVT7a
VT6a	12xVT8b	11xVT8a
43xVT10a	15xVT11a	9xVT12a
VT12b	VT12c	11xVT13
11xVT14a	9xVT15a	11xVT16a
11xVT17a	4xVT18a	4xVT18a