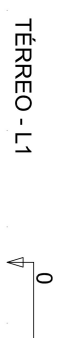
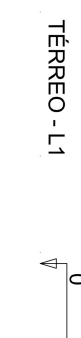
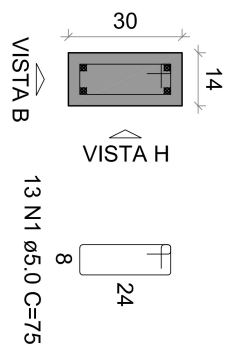


P1=P2=P3=P4=P5=P7=P8=P11=P12=P13=P18
P19=P24=P25=P27=P28=P29=P30=P31=P32



TOPO PLATIBANDA - L3

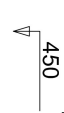
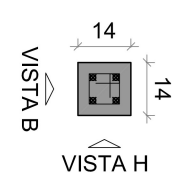
SEÇÃO ESC. 1:20



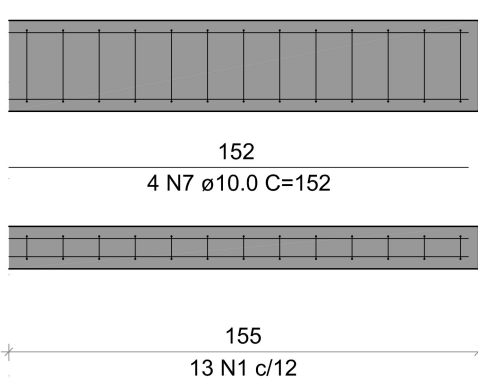
PILARETE1=PILARETE2=PILARETE3
PILARETE4=PILARETE5=PILARETE6

TOPO PLATIBANDA - L3

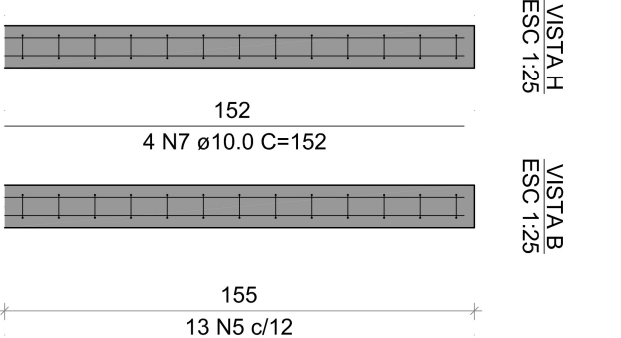
SEÇÃO ESC. 1:20



COBERTURA - L2



COBERTURA - L2



32xPILARES 14X
20xPILARES 14X

AÇO	N	D
CA60	1	()
CA50	2	
	3	
	4	
	5	
	6	
	7	
	8	
	9	

AÇO	DIAM (mm)	RE
CA50	10.0	
CA60	5.0	
PESO TOTAL (kg)		
CA50		442.4
CA60		160.4