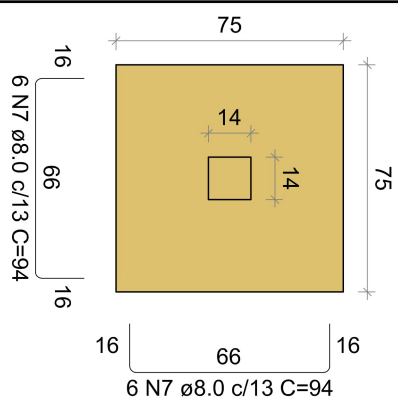


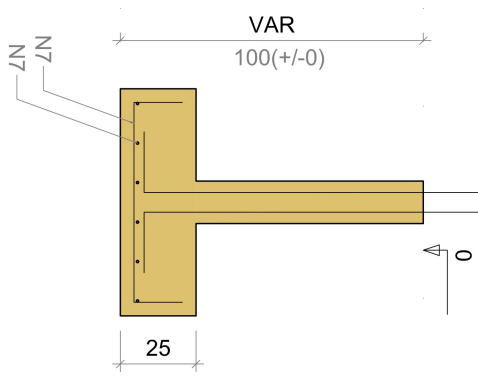
Solo com capacidade de suporte > 1.50 kgf/cm²

SAPATA DOS PILARETES 1, 2, 3, 4, 5 e 6

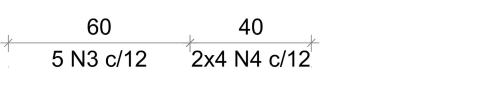
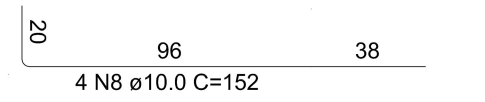
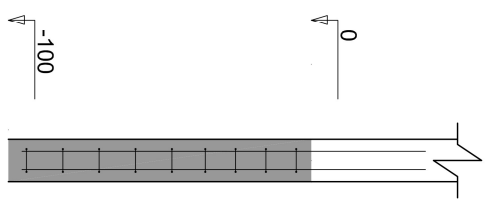
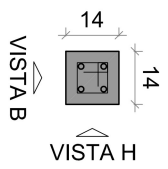
PLANTA
ESC 1:25



CORTE
ESC 1:25



TÉRREO - L1
SEÇÃO
ESC 1:20



Solo com capacidade de suporte > 1.50 kgf/cm²